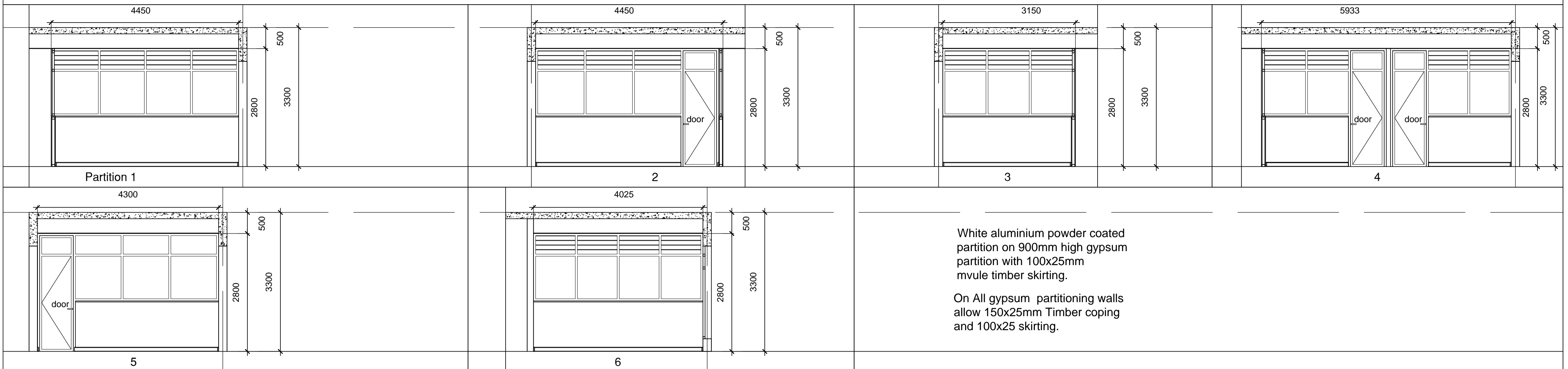
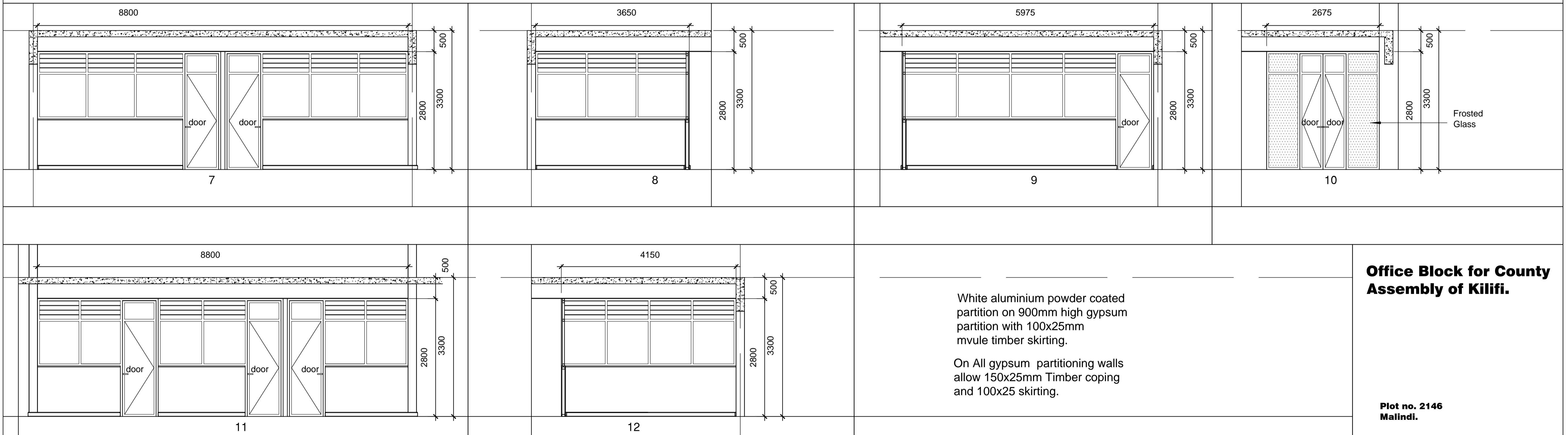


Partitions For Third Floor.



White aluminium powder coated partition on 900mm high gypsum partition with 100x25mm mvule timber skirting.
On All gypsum partitioning walls allow 150x25mm Timber coping and 100x25 skirting.

Partitions For Fourth Floor.

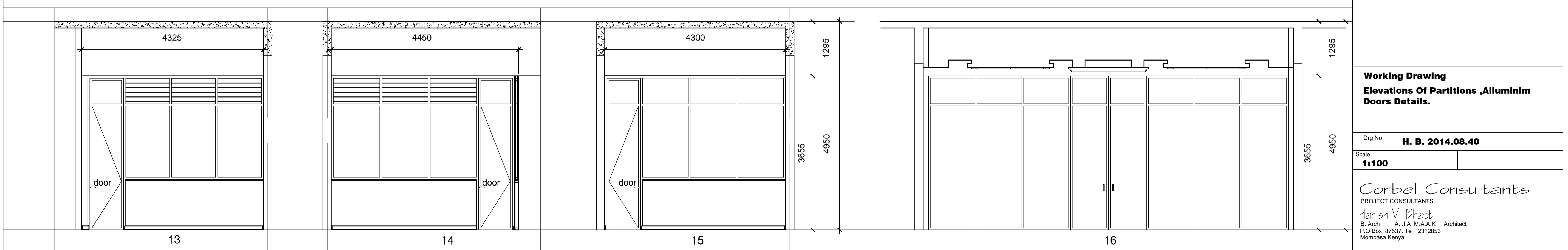


White aluminium powder coated partition on 900mm high gypsum partition with 100x25mm mvule timber skirting.
On All gypsum partitioning walls allow 150x25mm Timber coping and 100x25 skirting.

Office Block for County Assembly of Kilifi.

Plot no. 2146
Malindi.

Partitions For Ground Floor.



**Working Drawing
Elevations Of Partitions ,Alluminim
Doors Details.**

Drg No. **H. B. 2014.08.40**

Scale
1:100

Corbel Consultants
PROJECT CONSULTANTS.
Harish V. Bhatt
B. Arch A.I.I.A M.A.A.K Architect
P.O Box 87537, Tel 2312853
Mombasa Kenya